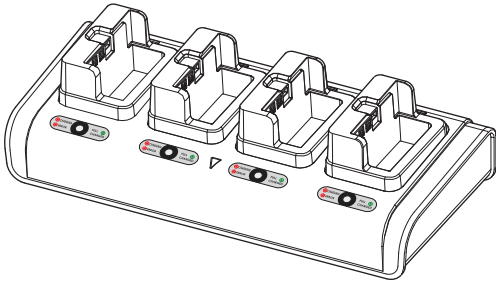


# 4 Unit Battery Charger S300/S400 (MTC400) User's Manual



STAR MICRONICS CO., LTD.  
536 Nanatsushinya, Shimizu-ku, Shizuoka,  
424-0066 Japan  
Tel: (int+81)-54-347-0112  
Fax: (int+81)-54-347-0409

### Information

This manual contains operating instructions and important safety. The MTC400 Lithium-Ion Quad Charger is designed to charge up to four Li-Ion battery packs simultaneously. The contents of this manual are subject to change without prior notice.

### Safety Guidelines

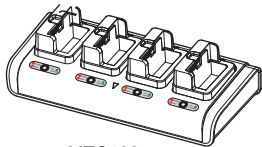
- Use only the power cord supplied in the package.
- Do not insert foreign objects into the charger.
- Keep the charger in a cool, dry place, away from direct sunlight, high temperature, and moisture.
- Do not operate the charger if it appears damaged.
- Do not disassemble, incinerate, or short circuit batteries, the charger, or related components.
- Do not operate the charger when your hands or body are wet.
- Do not operate the charger near water.
- To reduce the risk of burn, unplug the charger before cleaning.
- This charger cannot be used for any other types of batteries.
- Never attempt to disassemble or alter any part of this product. Contact your dealer for assistance.

### Suitable Environment for the Use of Quad Charger is as Follows :

1. Operation Temperature : 0°C to 40°C (No Condensation)
2. Storage Temperature : -30°C to +85°C
3. Relative Humidity : 5% to 95% (No Condensation)
4. Altitude : 0-10,000 feet
5. Cooling : Convectonal – Non-Vented Case
6. Applicable Battery Pack : A800-001 (Battery Pack S3/S4)

## 1. Setting Up the Quad Charger

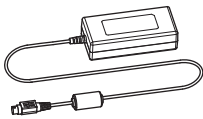
### ■ Checking the Components



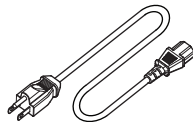
MTC400



User's Manual



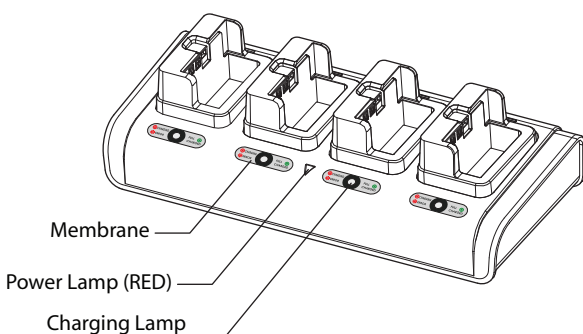
Adapter



Power Cord

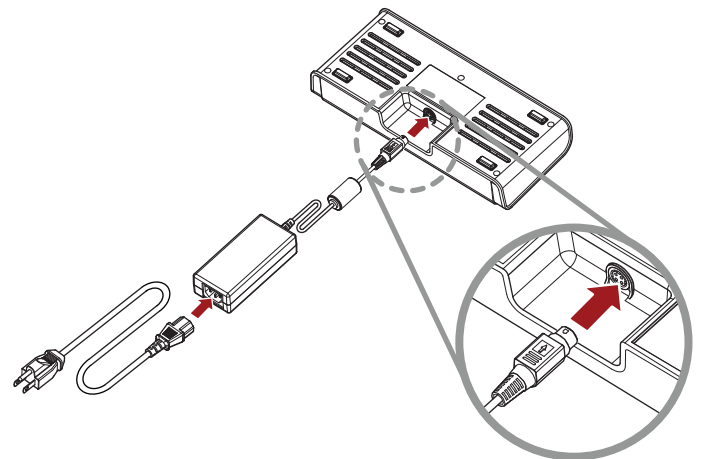
<The above items are standard accessories. If an item is missing from the box, contact your dealer.>

### ■ Part Name



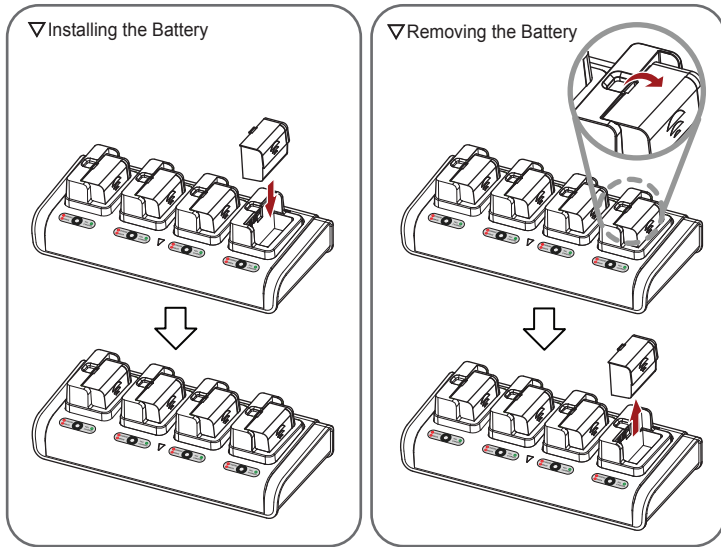
## 2. Using the Quad Charger

### ■ Connecting the Power Cable



1. Connect the AC cord to the adaptor, and connect the adaptor to power jack of the Quad.
2. Plug the AC cord into the electrical outlet with an input-power of 100~240VAC, 50~60Hz, 1.7A. When the AC cord is plugged in, the Red LED on the power lamp (▽) is illuminated up.

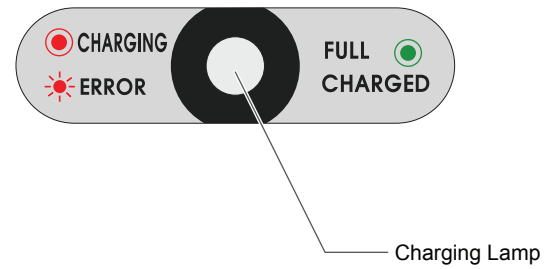
## ■ Charging the Battery Pack



1. Insert the battery pack into the charging bay as shown above.
2. Push the battery until it snaps into place.
3. If the battery is properly installed, the Quad will charge it.  
The 4 charging lamps report status.  
For reference, it takes approximately 90 to 120 minutes for the battery to fully charge.
4. To extract the battery from the Quad, pull up on the side latch and then remove it.

3

## ■ LED Indicator / Battery Status



1. Amber-Red-Green 2SEC ON and OFF : POWER ON
2. LED OFF : Battery Unloaded
3. Red LED ON : Charging
4. Green LED ON : Fully Charged, Trickle Charge
5. Red LED Flashing : Error  
(see Trouble Shooting on Page 5.)

4

## 3. Trouble Shooting

- If the power lamp (▽) is turned off
  - Check if the adaptor is properly connected or not.
- If LED is blinking when the battery is being charged
  - Check if the battery pack is properly installed or not
- LED Status on Quad Charger/ Battery Charger
  - If a battery has been fully charged in the Quad and is then installed into a printer with its AC adaptor plugged in, the charging lamp will remain off indicating a full charge.
  - Likewise, if a battery has been fully charged in a printer and then transferred to the Quad Charger, the charging lamp will remain off indicating a full charge.  
Consider these points if you see no illumination.

If you have additional questions, contact your dealer.

5

### Federal Communications Commission Radio Frequency Interference Statement

This device complies with Part 15 of the FCC Rules. Operation is subject to the following two conditions: (1) This device may not cause harmful interference, and (2) this device must accept any interference received, including interference that may cause undesired operation.

NOTE: This equipment has been tested and found to comply with the limits for a Class B digital device, pursuant to Part 15 of FCC rules. These limits are designed to provide reasonable protection against harmful interference in a residential installation. This equipment generates, uses and can radiate radio frequency energy and, if not installed and used in accordance with the instructions, may cause harmful interference to radio communications. However, there is no guarantee that interference will not occur in a particular installation. If this equipment does cause harmful interference to radio or television reception, which can be determined by turning the equipment off and on, the user is encouraged to try to correct the interference by one or more of the following measures.

- Reorient or relocate the receiving antenna.
- Increase the separation between the equipment and receiver.
- Connect the equipment into an outlet on a circuit different from that to which the receiver is connected.
- Consult the dealer or an experienced radio/TV technician for help.

*This statement will be applied only for the printers marketed in U.S.A.*

### FCC WARNING

Changes or modifications not expressly approved by the party responsible for compliance could void the user's authority to operate the equipment.

For compliance with the Federal Noise Interference Standard, this equipment requires a shielded cable.

For RF interference suppression, if a ferrite core is provided with this device, affix it to the interface cable.

6